

**etac**<sup>®</sup>  
Creating Possibilities



**etac**<sup>®</sup>

# Etac Turner Pro

Intuitive and easy to use sit-to-stand aid

# Etac Turner Pro

An easy-to-use turn aid that encourages natural standing and movement for the user and minimizes the risk of injury for the carer

## Encourages natural movement

Etac Turner Pro is a turn aid with an intuitive design that offers safe patient turning with standing support. This turn aid enables a good posture and minimises the risk of injury for the carer when transferring.

Etac Turner Pro encourages natural standing and sitting movement for the user. The only adjustments needed is the height of the leg support and the handle. After that, the transfer can be carried out safely while the carer and the user maintain eye contact and communication.

The orange handle provides an intense, high contrasting colour which can help users with impaired vision or dementia. The small-scale footplate makes it the perfect choice of transfer aid when transferring in narrow spaces.

Etac Turner Pro is compact and easy to grip, and due to its low weight of only 16.5 lbs, it is easy to bring along.



<b>Product</b>	<b>Item no.</b>	Leg support height	5.9 inch
Etac Turner Pro	16090106	Leg support adjustable height min - max	11.8 - 21.7 inch
<b>Weight</b>		<b>Material</b>	
Weight of unit	16.5 lbs	Powder-coated aluminium, plastic, steel.	
Maximum user weight (SWL)	440 lbs	<b>Washing instructions</b>	
<b>Dimensions</b>			
Total width	17.7 inch	Clean / disinfect the product using a standard non-abrasive cleaning agent with a pH between 5 and 9, or with a 70% disinfectant solution.	
Total depth	18 inch	The product can be safely cleaned in a cabinet washer-disinfector at 185°F for 3 minutes.	
Handle height	31.5 - 47.2 inch		
Footplate Ø	15.8 inch		
Foot plate height	0.8 inch		
Leg support width	15 inch		



## Features



### Compact

Etac Turner Pro is easy to transport due to its low weight of only 7.5 kg. It is compact, evenly balanced and easy to grip.



### Angled leg support

Soft and comfortable leg support with lateral support that follows the movement from sitting to standing. Easily adjusted to the required height.



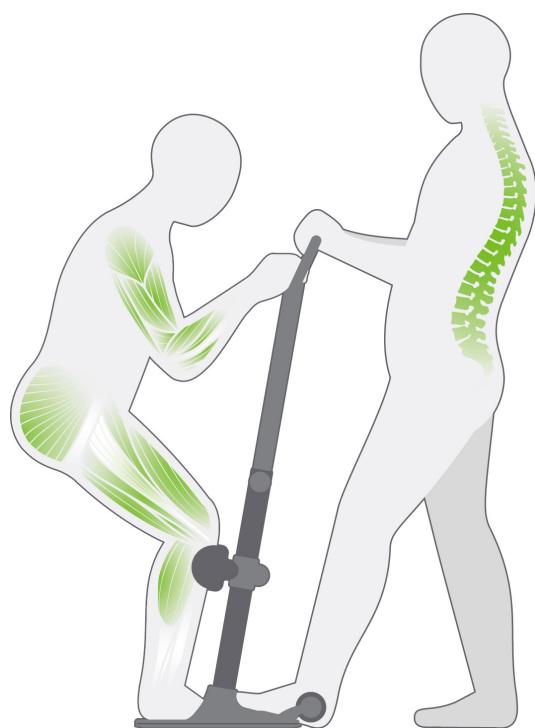
### Contrasting coloured handle

The orange handle provides a strong, high contrasting colour which can help users with impaired vision or dementia. It also offers many grip possibilities for both carer and user.



### Functional and easy to move

The base plate in cast aluminum is very easy to turn and it has an integrated anti-slip function. It is also very easy to move indoors on different floors, including carpets thanks to transport wheels.



*Etac Turner Pro encourages a natural standing and sitting movement for the user and provides a naturally good posture that minimizes the risk of injury to the carer during the transfer.*





Etac is a world-leading developer of innovative assistive devices and patient handling equipment. Since 1973, we have been committed to improving quality of life for the individual, family members and caregivers.

For the intended purpose of the products and latest information, please visit [www.etac.com](http://www.etac.com)

Etac



+1 (833) 818-0024



[sales.patienthandling@etac.com](mailto:sales.patienthandling@etac.com)



[www.etac.us.com](http://www.etac.us.com)

 **etac**<sup>®</sup>  
Creating Possibilities